

DC 4 Repairing shaft



Kit

pcs 5



Brass ring

pcs 8



Bush for hose

pcs 10



Washer

pcs 1

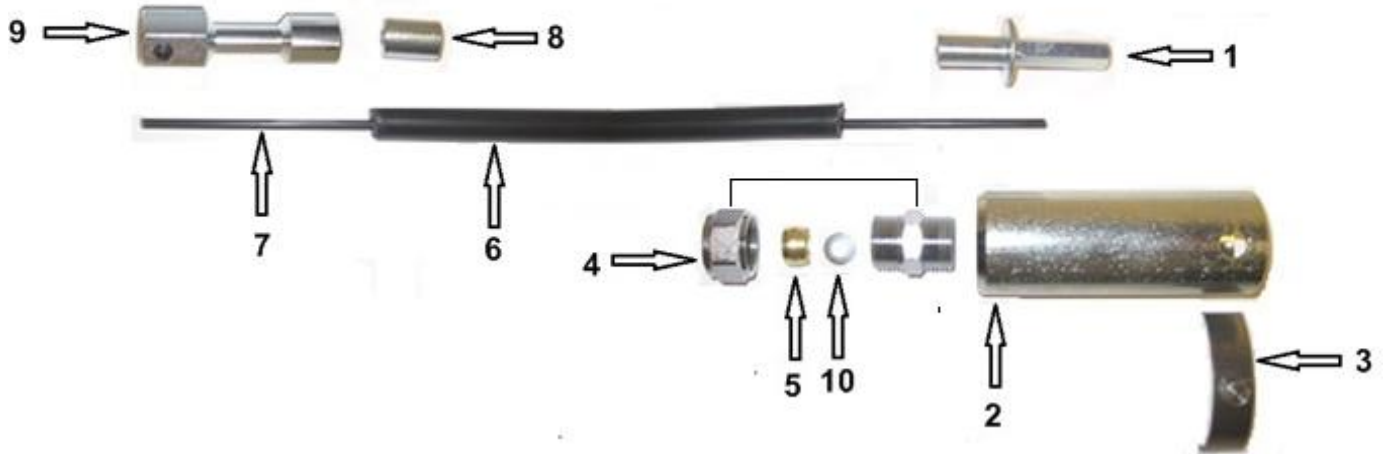


Coupling for shaft

pcs 9



Connector for the brush



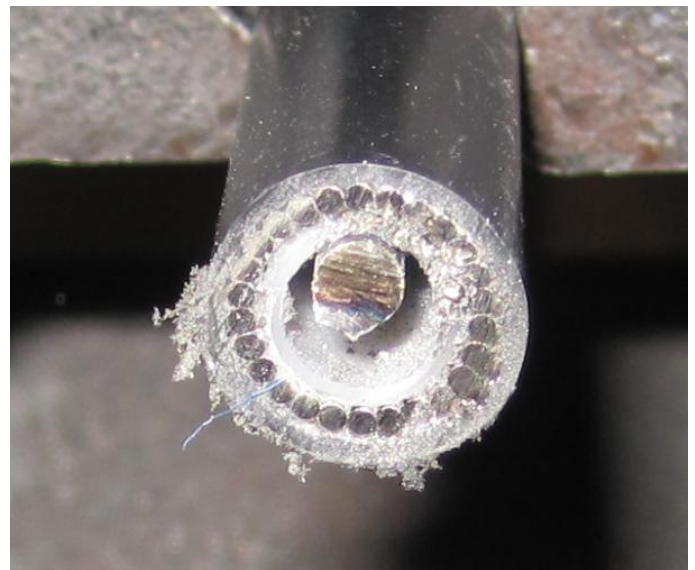
Prod. no.	Product	Pcs.
59613003	PD4 - Coupling for shaft S = 2,7 mm	1
59613004	DC4S - Coupling for shaft M = 4,0 mm	1
59613005	PD4 - Coupling for shaft S = 5,0 mm SOFT	1
59613010	DC4S - Coupling for hose	2
59613011	DC4S - Spring	3
59613012	DC4S - Screw-joint (brass)	4
59613014	DC4S/PD4 - Brass ring	5
59611101	DC4S - Hose antistatic PA	6
59611127	PD4 - Innercore shaft Ø 2,7 mm	7
59611140	DC4S - Innercore shaft Ø 4,0 mm	7
59611150	PD4 - Innercore shaft Ø 5,0 mm SOFT	7
59613013	DC4S/PD4 - Bush for hose	8
59613103	PD4 - Connector for the brush S = 2,7 mm	9
59613104	DC4S - Connector for the brush M = 4,0 mm	9
59613107	PD4 - Connector for the brush S = 5,0 mm SOFT	9
	PD4 - Washer	10



Tools which is needed for repairing the shaft



Cut the shaft at the break near the motor end



The shaft is cut including the innercore



Pull the innercore out of the hose from the Brush end (Approx 20-30 cm) and then cut the hose in the Motor-end.



Cut the Brush-end



Push the innercore back into the hose – so it is workable in the motor-end



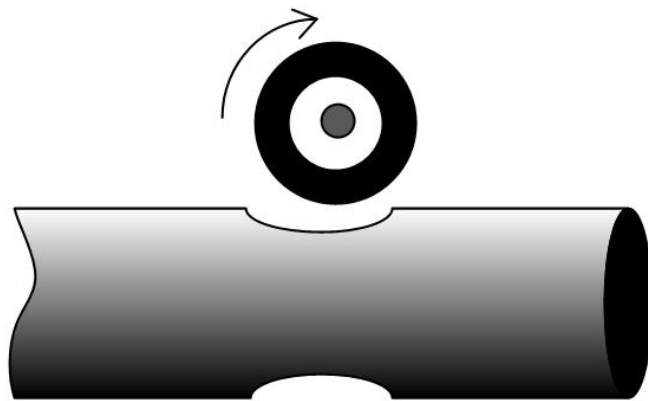
Mark the innercore with the size of the coupling.
This is used for grinding.

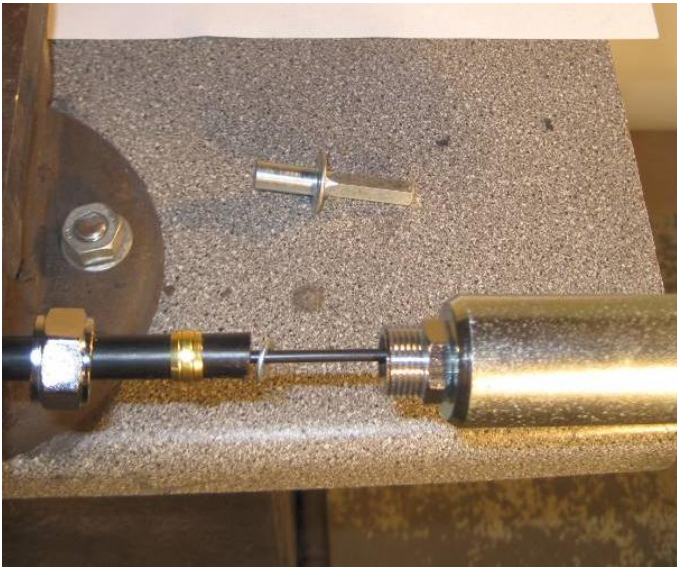


Grind the innercore to make the innercore round in the end.



Grind the innercore to make a "bottleneck"





Assemble the shaft as shown on the picture



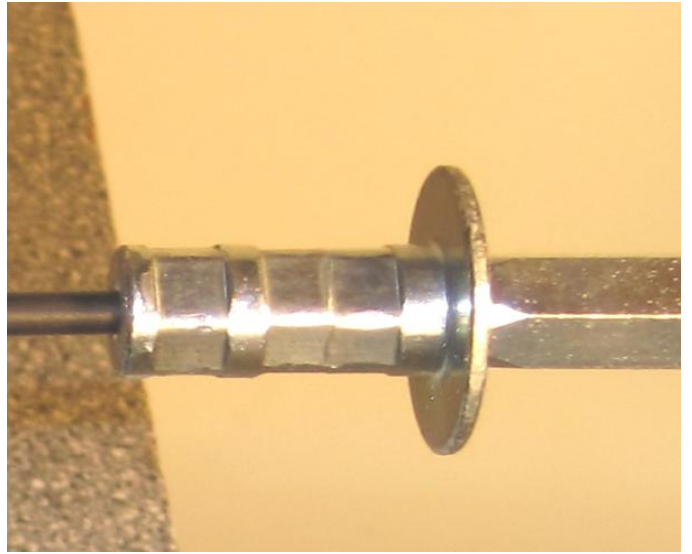
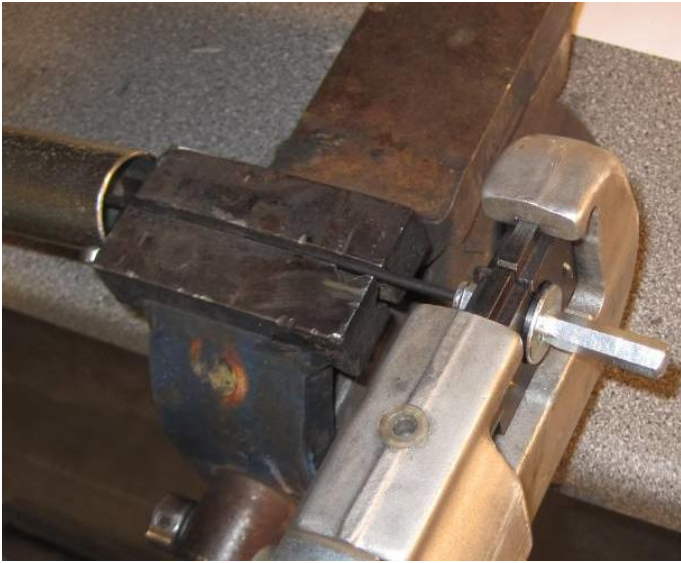
Assemble the Screw-joint and the coupling for hose using a 20 and 18 wrench.



Put the coupling for shaft on the innercore



Press the coupling for shaft on the innercore using the prestool



Press 3 times



Press the coupling for shaft back into the coupling for hose.

After repairing the motor-end then repair the brush-end



The Brush-end looks like this after repairing the motor-end



Put on the Bush for hose



Use glue to fix it



Press it on to the hose



Mark the middle of the Bush



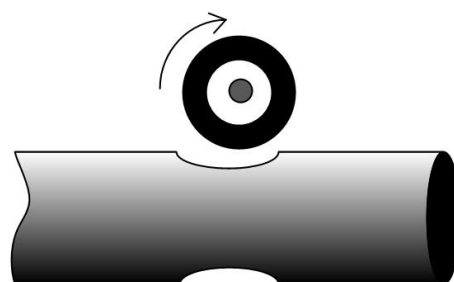
Use the connector for the brush to mark the length – as shown on the picture.



Cut the innercore at the mark

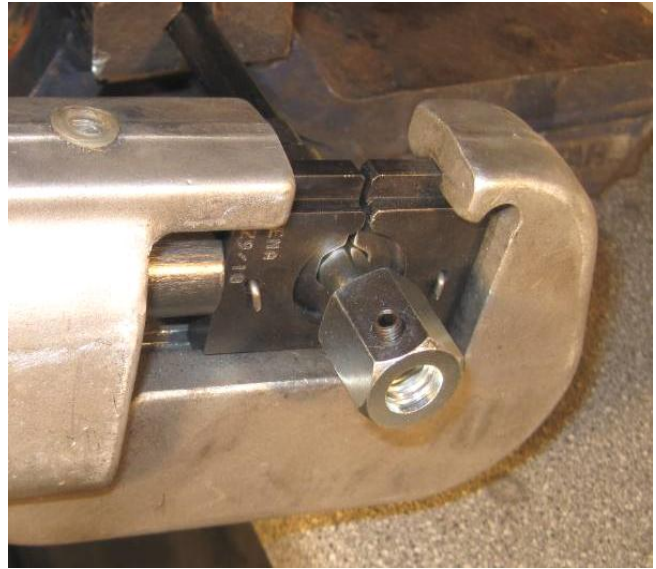


Grind the innercore making a bottleneck





Gently put the connector for brush onto the innercore until the mark.



Press the connector for brush and be careful that the connector is not moved away from the mark



The connector is pressed 3 times.



After the connector is pressed it can be moved approx 0,5 cm over the bush.